



---

Meridian Guide to GE  
Centricity Practice  
Management - ICD-10  
Charge Posting

## **Disclaimers**

© 1998-2015 Meridian Medical Management. All rights reserved. This publication is protected by copyright, is the confidential property of, and all rights are reserved by Meridian Medical Management. It may not, in whole or part, be copied, photocopied, reproduced, translated, or reduced to any electronic medium or machine-readable form without prior consent, in writing, from Meridian Medical Management. It is possible that it may contain technical or typographical errors. Meridian Medical Management provides this publication "as is" without warranty of any kind, either expressed or implied. All patient names, provider names, and offices are fictional. Any resemblance to actual persons or locations is purely coincidence.

Meridian Medical Management reserves the right to make changes in specifications and features shown herein, or discontinue the products described at any time without notice or obligation. This does not constitute a representation or warranty or documentation regarding the product or service featured. Contact your Meridian Medical Management Representative for the most current information and/or inquiries regarding copying and/or using the materials contained in this document outside of the limited scope described herein.

Meridian Medical Management  
75 Post Office Park  
Wilbraham, MA 01095

## **Trademark Acknowledgement**

Meridian Manager ®, Meridian Appointment Scheduler ®, Meridian Practice Reporter ®, Meridian Collector ®, Meridian Client Center ®, and Meridian EMRge ® are registered trademarks or Meridian Medical Management. Microsoft ®, Windows XP ®, Windows Vista ®, and Word ® are registered trademarks of Microsoft Corporation. All other products and company names are trademarks of their respective owners.

## **Limitations and Conditions of Use**

Meridian Medical Management furnishes this document to you, a current Meridian Medical Management customer, as Meridian Medical Management confidential information pursuant to a non-disclosure agreement (NDA) or the confidentiality provisions of a service contract between you and Meridian Medical Management. If you are not (i) a current Meridian Medical Management customer, and (ii) subject to contractual obligations of confidentiality to Meridian Medical Management, you are not authorized to access this document.

**Introduction:** To ensure that users are able to identify when ICD 10 codes are to be used during the charge entry process within the GE Centricity Practice Management System.

**Process:**

1. The date of which the insurance company decides to accept ICD 10 will determine if the charge being submitted to this payer will require ICD 10 or not.
2. This acceptance date from the payer is entered in Centricity on the insurance file by Data Management.
3. Below is an example of what will appear if the insurance requires ICD 10 but ICD 10 codes are not present on the charge. The user is unable to move forward without changing the code properly.

Personal: .00	Insurance: .00	Work Comp: .00	Collection: .00
---------------	----------------	----------------	-----------------

---

**Primary Diagnosis: Must be a valid ICD10 Diagnosis code (Insurance Code 0001 requires ICD10)**

---

Charge Entry	
Provider	CAR
Place of Service	1
Date of Service	03/09/2015
Diagnosis Code 1	4019
Diagnosis Code 2	
Procedure Code	99213
Insurance Set	1 - MEDICAL
Primary Insurance	0001

4. If an insurance is not accepting ICD 10 based on the acceptance date added to its file will also receive a warning if ICD 10 is attempted to be used. Example

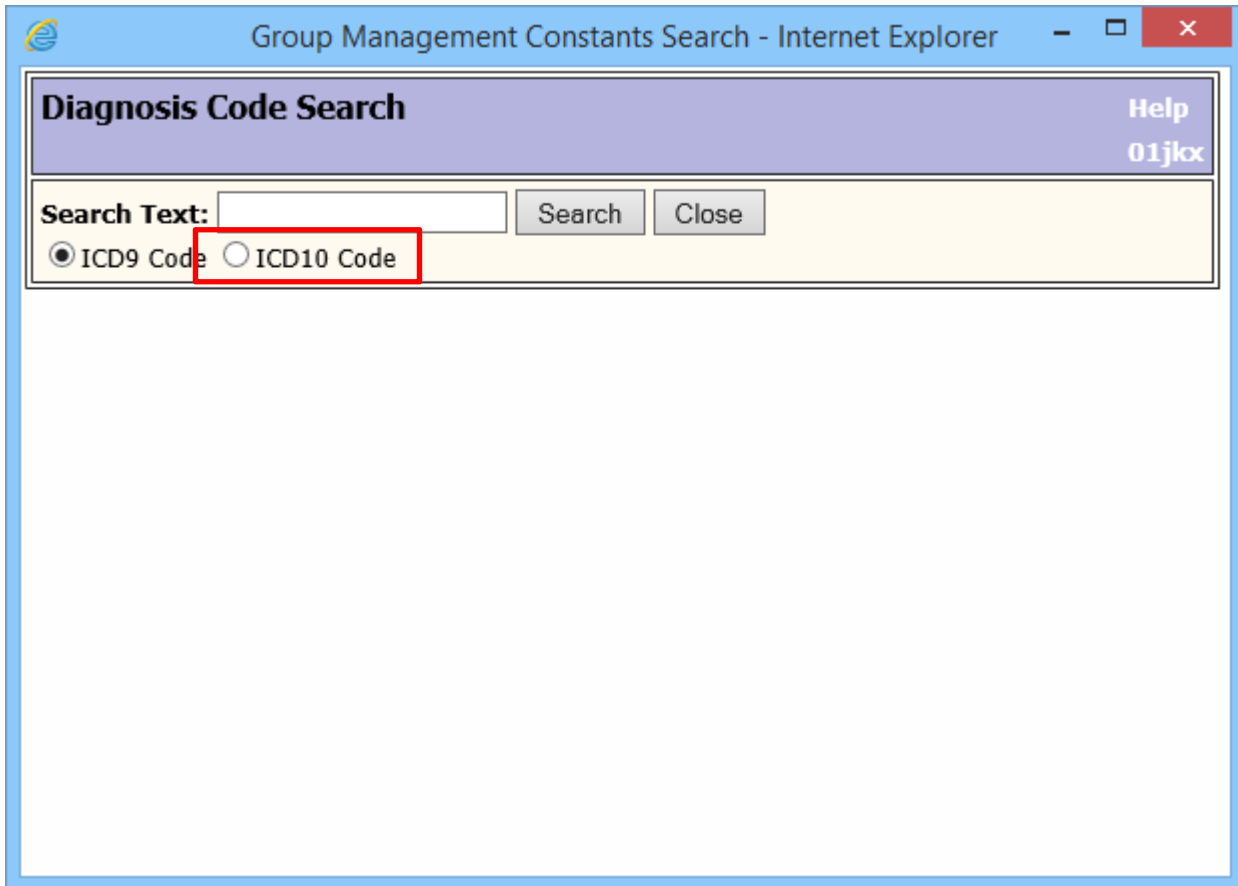
---

**Primary Diagnosis: Must be a valid ICD9 Diagnosis code**

---

Provider	CAR
Place of Service	1
Date of Service	04/09/2015
Diagnosis Code 1	A00
Diagnosis Code 2	
Procedure Code	99213
Insurance Set	1 - MEDICAL
Primary Insurance	0460

5. When selecting the grey ellipsis next to the diagnosis field to select an ICD 10 notice the option to choose the ICD10 code file under the Search Text field.



6. After the appropriate ICD 10 codes have been chosen as well as the proper procedure code, select Next to continue to the following page.
7. Notice the additional link provided on the bottom right of the screen titled "Diagnosis Code Mapping", this will list the ICD 9 codes that are mapped to the ICD 10 codes that have been entered for that particular charge.

[Diagnosis Code Mappings](#) 

Diagnosis Code Mappings	
Acc	1607
Pat	[REDACTED]
Diagnosis Code Mappings	
ICD-10 Code 1	J10
ICD-9 Codes	4019
ICD-10 Code 2	
ICD-9 Codes	
ICD-10 Code 3	
ICD-9 Codes	
ICD-10 Code 4	
ICD-9 Codes	
ICD-9 Codes	4019

- Once all ICD 10 codes have been entered select Post to post the charge.
- Below is additional information on the Mapping portion within GE Centricity Group Management.

## About ICD10 Code to ICD9 Code Mapping

ICD10 code to ICD9 code mapping functionality is available. When the date of service is equal to or greater than the ICD10 compliance date (October 1, 2014), the diagnosis code(s) entered must equal ICD-10 code(s).

A link is available in charge posting and edit programs (see Figure 3.3) to allow you to file ICD-9 codes with the charge if the payer(s) are not compliant yet and/or the user chooses to file ICD-9 codes for information and/or rebilling purposes.

You can choose to define default mapping values in diagnosis code constants. If entered, the values default on the charge. If you do not want to use mapping, you should not define any mapping values in diagnosis code constants. If the payer(s) are not compliant with the ICD10 mandate, you would then have to manually enter the ICD9 code(s).

Mapping functionality works as follows:

- **Date of Service is less than October 1, 2014 and Charge Insurances are not ICD10 ready.**

When the date of service is less than October 1, 2014 and the ICD10 Insurance date is equal to or greater than October 1, 2014, you must enter valid ICD9 codes when diagnosis codes are defined as required fields. ICD10 codes cannot be posted on the charge.

- **Date of Service is less than October 1, 2014 and Charge Insurances are ICD10 ready.**

If an insurance company is ready for ICD10 codes prior to the compliance date (or wants to test ICD10 codes), you could define the ICD10 Insurance date as less than October 1, 2014.

When posting charges, if the date of service is equal to or greater than the ICD10 Insurance date, you must enter valid ICD10 codes when diagnosis codes are defined as required fields. You may also file ICD9 codes for informational (or potential rebilling) purposes.

Resources: GE Centricity Practice Management System; GE Centricity